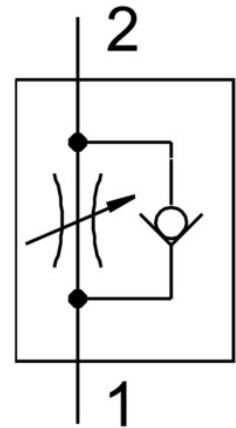


One-way flow control valve GRLA-1/8-QS-8-RS-B

Part number: 162966

FESTO



Data sheet

Feature	Value
Type code	GRLA
Valve function	Exhaust air flow control non-return function
Pneumatic connection 1	QS-8
Pneumatic connection 2	G1/8
Actuation type	Manual
Adjusting element	Knurled screw
Type of mounting	Screw-in
Standard nominal flow rate in flow control direction	650 l/min
Standard nominal flow rate in non-return direction	600 l/min ... 750 l/min
Ambient temperature	-10 °C ... 60 °C
Explosion prevention and protection	Observe the information on the certificate Zone 1 (ATEX) Zone 2 (ATEX) Zone 21 (ATEX) Zone 22 (ATEX)
Mounting position	Any
Symbol	00991452
Operating pressure for entire temperature range	0.2 bar ... 10 bar
Standard flow rate in flow control direction 6 → 0 bar	1080 l/min
Standard flow rate in non-return direction at 6 → 0 bar	800 l/min ... 1250 l/min
Operating medium	Compressed air as per ISO 8573-1:2010 [7:4:4]
Information on operating and pilot media	Operation with oil lubrication possible (required for further use)
Storage temperature	-10 °C ... 40 °C
Temperature of medium	-10 °C ... 60 °C
Nominal tightening torque	3.5 Nm
Tolerance for nominal tightening torque	± 20%
Permissible actuation moment, adjusting screw	0.4 Nm
Product weight	25 g
Material of screwed trunnion	Wrought aluminum alloy

Feature	Value
Note on materials	RoHS-compliant
Seals material	NBR TPE-U(PU)
Releasing ring material	POM
Knurled head material	Wrought aluminum alloy
Material of adjusting screw	Brass
Swivel joint material	PBT-reinforced